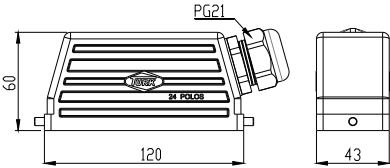


# Tomadas Multipolares | 4 pólos 80A - 8 pólos 16A/400V | 1 trava

## CARCAÇA SAÍDA LATERAL

Código

TM24Y

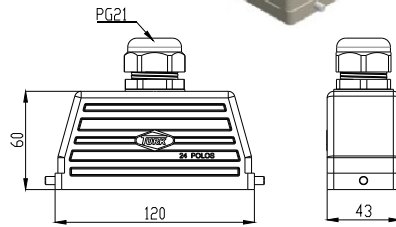


Dimensões em mm

## CARCAÇA SAÍDA SUPERIOR

Código

TM24K



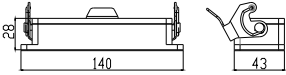
## Características:

- Carcaças e bases em alumínio injetado
- Grau de proteção: IP65
- Capacidade dos contatos:  
4 pólos 80A e 8 pólos 16A - 400V
- Bitola dos fios:  
Sinal 16A: 0,75 a 2,5 mm<sup>2</sup>  
Potência 80A: 1,5 a 16 mm<sup>2</sup>
- Pinos de contato por parafusos
- Contatos macho e fêmea em latão prateado
- Temperatura de trabalho -40°C +125°C

## BASE BAIXA

Código

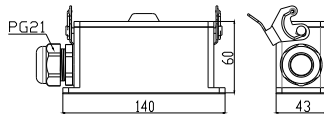
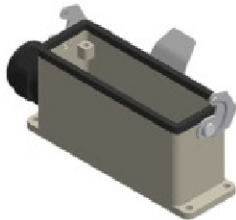
TM24X



## BASE ALTA

Código

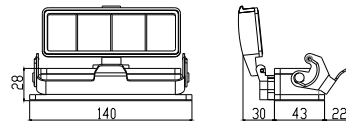
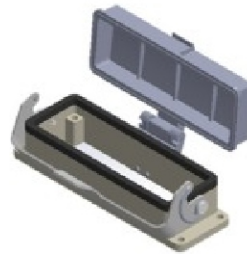
TM24W



## BASE BAIXA C/TAMPA

Código

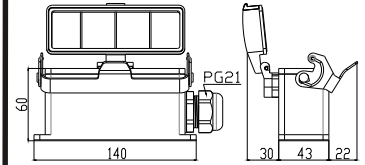
TMT24X



## BASE ALTA C/TAMPA

Código

TMT24W

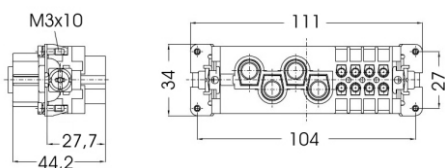
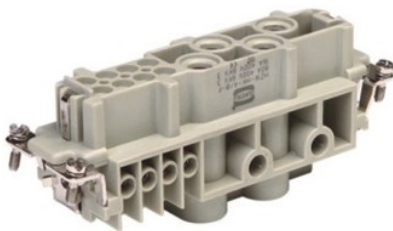


SUJEITO A ALTERAÇÃO SEM PRÉVIO AVISO

## INSERTO FÊMEA

Código

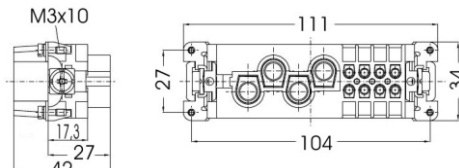
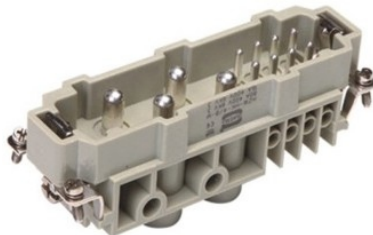
TM4/8F



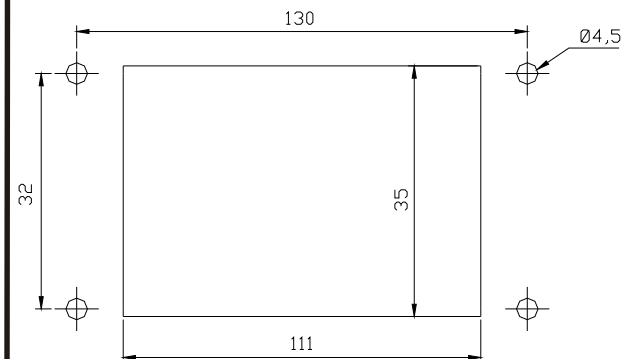
## INSERTO MACHO

Código

TM4/8M



## MEDIDAS PARA FIXAÇÃO DAS BASES



Dimensões em mm