



Série TG

Sensores Magnéticos Tubulares

Características:

- Invólucro tubo de latão
- Temperatura de trabalho -5°C +60°C
- Expectativa de vida 10.000.000 operações
- Acionamento feito através de imã
- Fornecido com cabo padrão 1,5m
- Grau de proteção: IP67

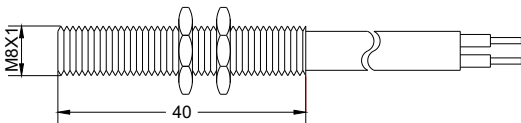


MODELOS E CARACTERÍSTICAS TÉCNICAS

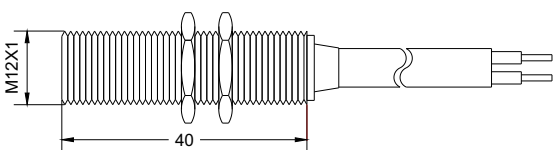
Modelo	Tensão/máx.	Corrente	Potência	Contato	Distância (mm)					Acionamento	Dimensões
					TTSO	TTC1	TTR8	TTR12	TTR20		
TG3K	230Vcc/ca	3A	60W	NA	10	10	5	13	8	Topo	Ver desenho
TG3R	230Vcc/ca	3A	60W	NA	10	10	5	13	8	Topo	Ver desenho
TG3R-S	150Vcc/ca	0,5A	10W	NA	20	20	12	20	16	Topo	Ver desenho TG3R
TG3RS-NF	100Vcc/ca	0,25A	3W	NF	15	15	7	15	10	Topo	Ver desenho TG3R
TG4A	250Vcc/ca	1,3A	80W	NA	6	8	4	10	5	Lateral	Ver desenho
TG4R	250Vcc/ca	3A	60W	NA	10	10	4	10	5	Topo	Ver desenho
TG4R-S	150Vcc/ca	0,5A	10W	NA	18	20	11	20	15	Topo	Ver desenho TG4R
TG4RS-NF	100Vcc/ca	0,25A	3W	NF	12	13	5	13	8	Topo	Ver desenho TG4R

DIMENSÕES (mm)

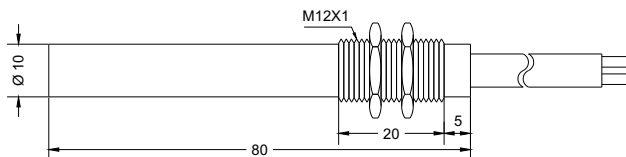
TG3R



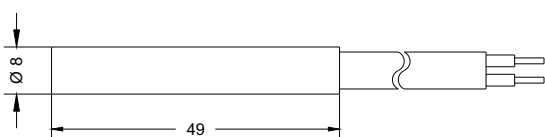
TG4R



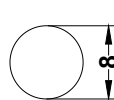
TG4A



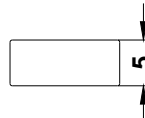
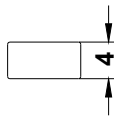
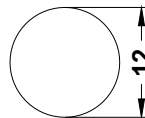
TG3K



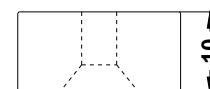
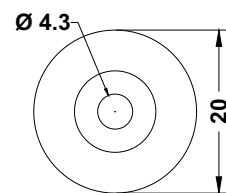
TTR8



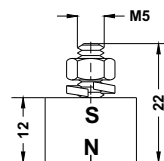
TTR12



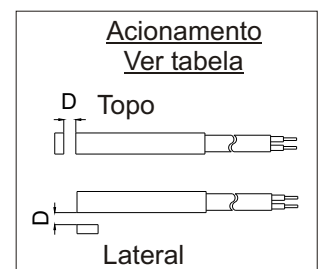
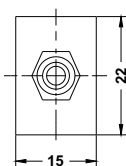
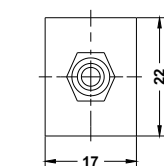
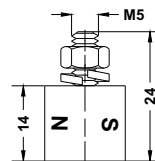
TTR20



TTC1



TTSO



SUJEITO A ALTERAÇÃO SEM PRÉVIO AVISO

