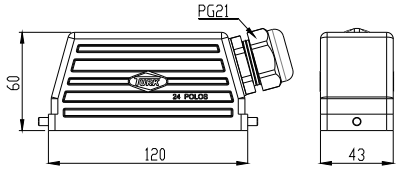


CARCAÇA SAÍDA LATERAL

Código

TM24Y

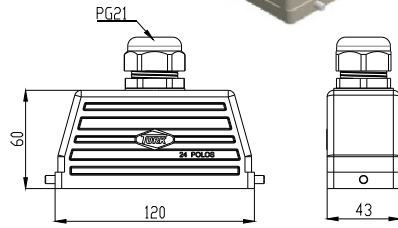


Dimensões em mm

CARCAÇA SAÍDA SUPERIOR

Código

TM24K



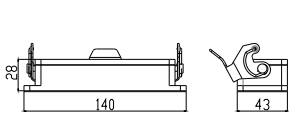
Características:

- Carcaças e bases em alumínio injetado
- Grau de proteção: IP65
- Capacidade do contatos: 16A - 400V
- Bitola dos fios: 0,75 a 2,5 mm²
- Pinos de contato por parafusos
- Contatos macho e fêmea em latão prateado
- Temperatura de trabalho -40°C +125°C

BASE BAIXA

Código

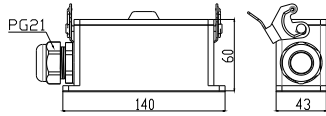
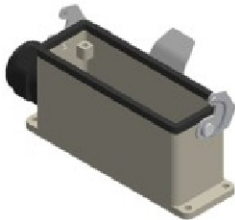
TM24X



BASE ALTA

Código

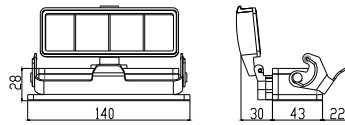
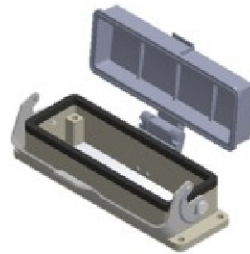
TM24W



BASE BAIXA C/TAMPA

Código

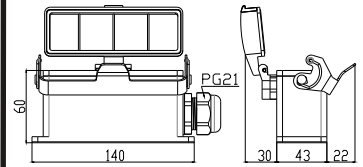
TMT24X



BASE ALTA C/TAMPA

Código

TMT24W

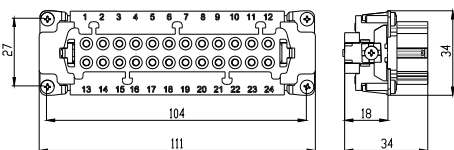
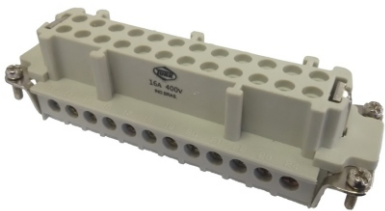


SUJEITO A ALTERAÇÃO SEM PRÉVIO AVISO

INSERTO FÊMEA

Código

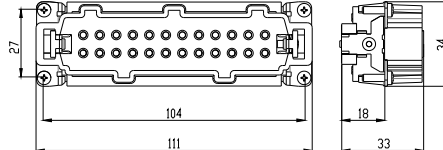
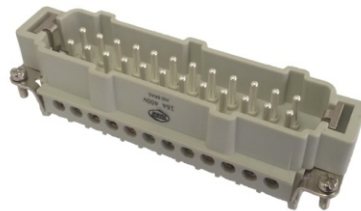
TMH24F



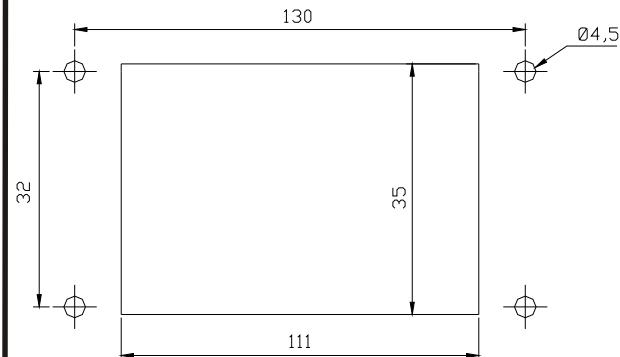
INSERTO MACHO

Código

TMH24M



MEDIDAS PARA FIXAÇÃO DAS BASES



Dimensões em mm

