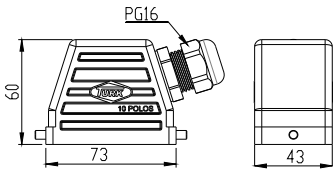


CARCAÇA SAÍDA LATERAL

Código

TM10Y

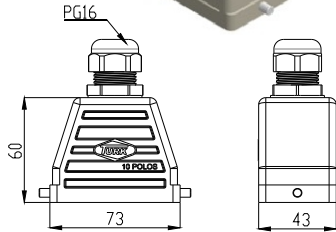


Dimensões em mm

CARCAÇA SAÍDA SUPERIOR

Código

TM10K



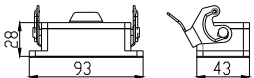
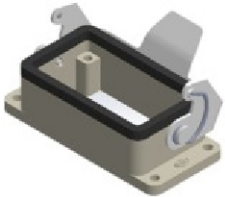
Características:

- Carcaças e bases em alumínio injetado
- Grau de proteção: IP65
- Capacidade do contatos: 16A - 400V
- Bitola dos fios: 0,75 a 2,5 mm<sup>2</sup>
- Pinos de contato por parafusos
- Contatos macho e fêmea em latão prateado
- Temperatura de trabalho -40°C +125°C

BASE BAIXA

Código

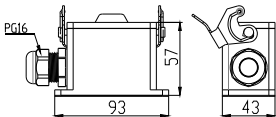
TM10X



BASE ALTA

Código

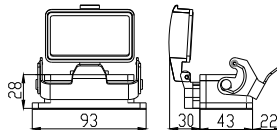
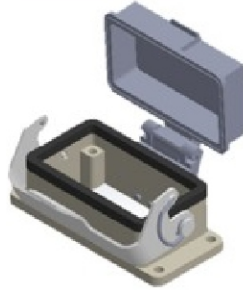
TM10W



BASE BAIXA C/TAMPA

Código

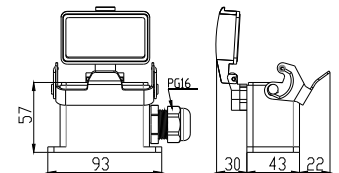
TMT10X



BASE ALTA C/TAMPA

Código

TMT10W

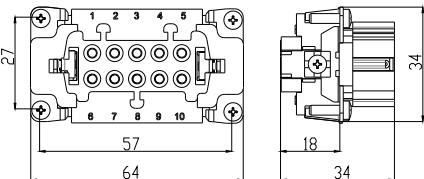


SUJEITO A ALTERAÇÃO SEM PRÉVIO AVISO

INSERTO FÊMEA

Código

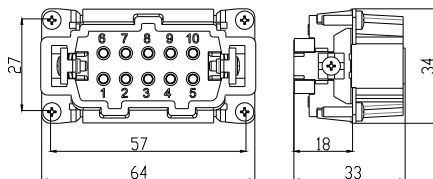
TMH10F



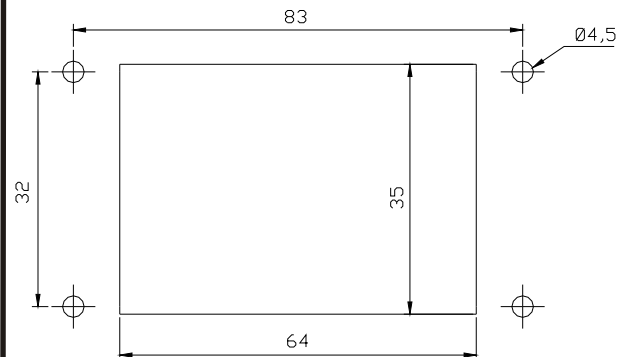
INSERTO MACHO

Código

TMH10M



MEDIDAS PARA FIXAÇÃO DAS BASES



Dimensões em mm

