

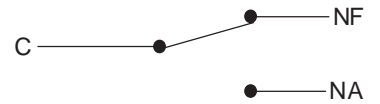
TN - MICRO CHAVES - (SPDT)



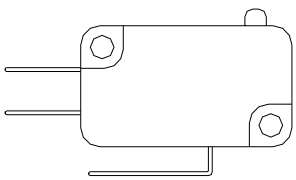
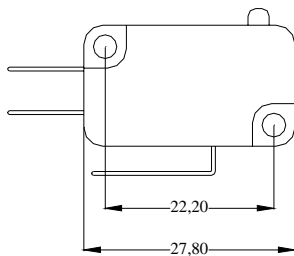
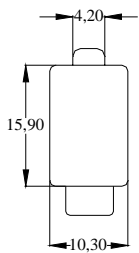
Características:

- Contatos de ação rápida
- Contatos - prata - óxido de cádmio
- Capacidade dos contatos 15A - 250 VCA
- Invólucro - Poliéster
- Terminais tipo faston
- Circuito SPDT

SPDT

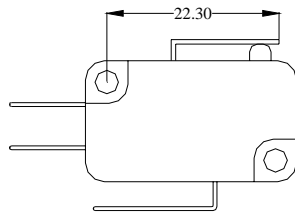


DIMENSÕES PRINCIPAIS E CARACTERÍSTICAS OPERACIONAIS



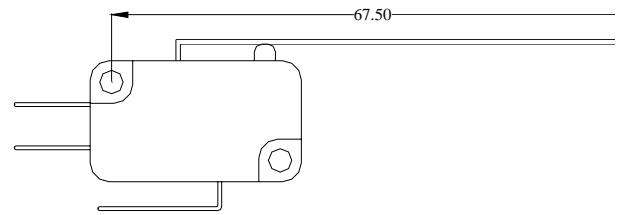
TN23 - 250V/15A

Força: 80g



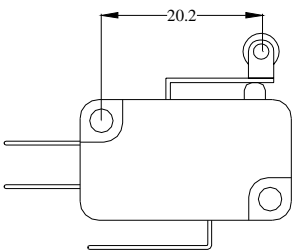
TN21/1 - 250V/15A

Força: 80g



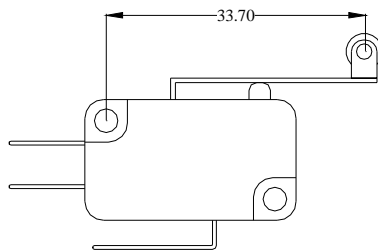
TN15/1 - 250V/15A

Força: 20g



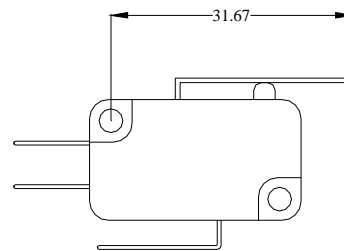
TN17/1 - 250V/15A

Força: 80g



TN161/1 - 250V/15A

Força: 80g



TN20/1 - 250V/15A

Força: 20g

Dimensões em milímetros

Obs: Outros modelos sobre consulta.



Rua Curuçá, 1.415 - Vila Maria - São Paulo - SP - CEP 02120-002 - Fone: 2631-4840
www.turk.com.br - turk@turk.com.br

SUJEITO A ALTERAÇÃO SEM PRÉVIO AVISO